



FEMA

# FEMA Region IV Silver Jackets

FEMA Region 4 Silver Jacket Successes

Laura Algeo

August 19, 2014

**RiskMAP**

Increasing Resilience Together



# Silver Jackets Panel Discussion

## FEMA's Risk Management Programs reside in the Mitigation Division

- Risk Analysis (SC/NC, GA/AL)
  - Risk Analysis includes assessing critical information both before and after a disaster strikes, developing and maintaining a state-of-the art inventory of flood maps, and supporting mitigation planning.
- Hazard Mitigation Assistance (TN/KY)
  - FEMA's Hazard Mitigation Assistance grant programs are designed to provide funding to protect life and property from future natural disasters.
- Floodplain Management and Insurance (FL/MS)
  - Helps reduce flood losses by encouraging communities to participate in the National Flood Insurance Program (NFIP) through adoption and enforcement of local floodplain management programs that mitigate the effects of flooding on new and existing development; in exchange, affordable flood insurance coverage is made available to property owners throughout the community.
- Environmental and Historic Preservation (JFO interactions)
  - integrates the protection and enhancement of environmental, historic, and cultural resources into FEMA's mission; ensures that FEMA's activities and programs related to all programs comply with federal environmental and historic preservation laws and executive orders; and provides technical assistance

# Silver Jackets Panel Discussion

Silver Jackets Partnerships in Region IV split between programs

- AL
- GA
- TN- Charter to be signed Sept 23
- SC – Charter signed
- KY
- FL
- MS – Cammo Jackets
- NC – part of State Hazard Mitigation Advisory Group (SHMAG).



As part of Partners in Mitigation Workshop for 2014 – invited KY, GA, SC and FL to brief all Mitigation Partners in Region IV on SJ successes

# Beneficial Partnerships - Kentucky

- **First pilot for FEMA's "Know your Line" Campaign**
  - Program expanding to be more than just signage, but to increase discussions with the communities to raise their awareness and drive the idea of taking actions at local level –
  - Partnership managed by COE; including FEMA, NOAA, USGS etc.
  - Helped to build relationships so that now some agencies will call the FEMA rep when they are beginning projects to see if there is overlap or benefits to coordination
- **When HMA program acquires properties, they had to have all properties reviewed by the COE to ensure no levee actions are planned**
  - Instance in KY post disaster, where coordination was taking months to get just a few properties approved, but due to relationship with the COE via SJ, they worked out a new approach that led to 100s being reviewed in just weeks

# Beneficial Partnerships - Georgia

- Flood Inundation Mapping -Collaboration between NOAA, USGS, USACE, FEMA, FHWA, GEMA, GADNR, and local counties and cities
  - Develop interactive flood forecast inundation mapping tools for multiple communities
    - Ocmulgee River and the Chattahoochee River.
  - Collaboration show the predicted area and depth of forecast flooding in near real-time via a library of flood inundation maps
  - Aids emergency managers, county managers, and the general public in managing risks before, during, and after a flood event. Maps displayed on the NWS Advanced Hydrologic Prediction Service (AHPS) and USGS websites.
- Using this tool, FEMA FMI is able to assist local floodplain administrators in determining areas that may be flooded and the level of flooding that may be outside the SFHA or areas that have detailed FIS data

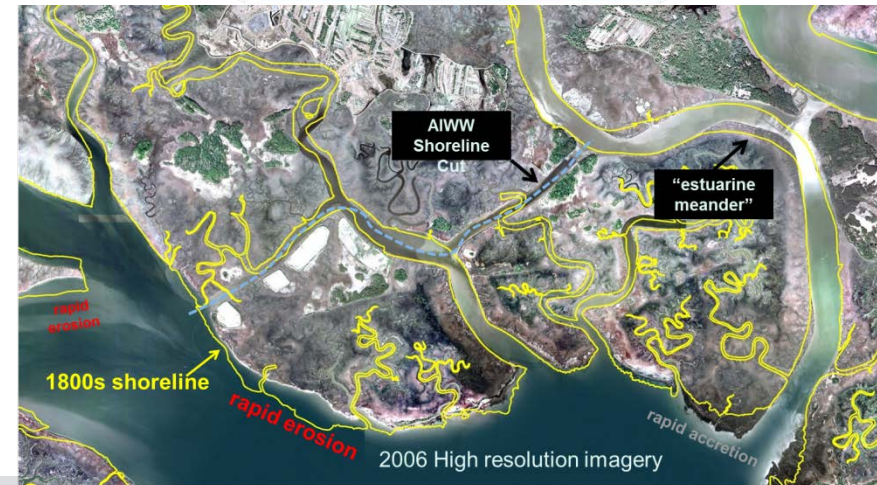
<http://water.weather.gov/ahps/inundation.php>

# Beneficial Partnerships – South Carolina

- **Discovery/Risk MAP meetings**
  - State and FEMA work to ensure that all SJ team members are invited to the community meetings in SC
  
- **NRCS-SCDOT stream bank protection**
  - the NRCS stream bank improvement of Turkey Creek in Sumter, SC called for the protection of SCDOT property incorporated a small portion of a USACE flood control project. Relationships built in the Silver Jackets team, fostered a smooth USACE evaluation and approval of the project under 33 U.S.C Section 408 to alter or modify a federal project

# Beneficial Partnerships – South Carolina

- **Mapping Coastal Erosion Hazards along Sheltered Coastlines in South Carolina**
  - Helps Promote goals of RiskMAP -Plug for Sara Brown with Charleston District's Poster
  - Contracted with Georgia Southern University, creator of Analyzing Moving Boundaries Using R (AMBUR) software which provides a suite of functions to analyze historical shoreline change or other boundary movements.
- Task 1: Digitize three historical shorelines in the study region. Data provided by NOAA CSC, SCDHEC - OCRM
- Task 2: Digitize shoreline alterations in the study region.
- Task 3: Use AMBUR to determine long-term erosion rates.
- Task 4: Evaluate results to determine erosion “hot spots,” erosion drivers, and management implications.



# Questions & Answers

